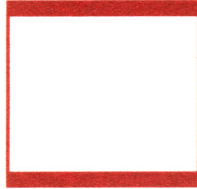


**MUTUAL
REAL ESTATE
CORPORATION**



SUMMARY OF PERTINENT INFORMATION

Subject: Development Parcel of Ground (corner property)

Location: 554 E Washington Lane
(Washington Lane & Chew Avenue)

City: Philadelphia

County: Philadelphia

State: Pennsylvania

Lot Size: 3,178 square feet

OPA/BRT#: 871580180

Zoning: CMX2 (Neighborhood Commercial Mixed Use)

Water/Sewer: Public

Taxes: \$4,230.85

Description: Rectangular shaped commercial mixed use property at a signalized light, corner of Washington Lane and Chew Avenue. Many retail commercial and multi-family uses possible on this site. Well traveled area.

Rent: \$36,000.00/annum net, net, net

The foregoing information was furnished to us by sources which we deem to be reliable, but no warranty or representation is made as to the accuracy thereof. Subject to correction of errors, omissions, change of price, prior sale or withdrawal from market without notice. No liability of any kind is to be imposed on the Broker herein.

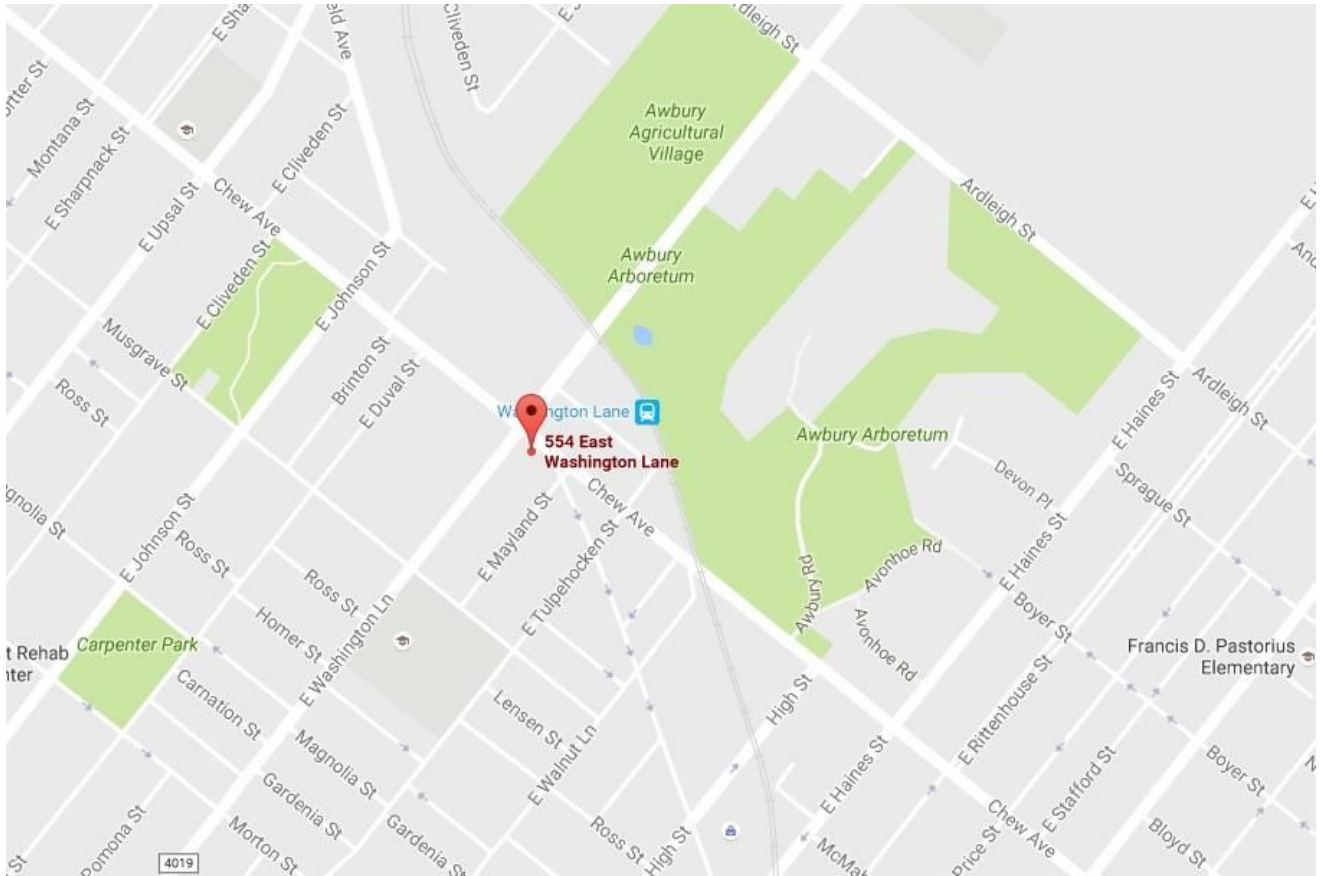
Sale:

\$ 350,000.00



TAX MAP

The foregoing information was furnished to us by sources which we deem to be reliable, but no warranty or representation is made as to the accuracy thereof. Subject to correction of errors, omissions, change of price, prior sale or withdrawal from market without notice. No liability of any kind is to be imposed on the Broker herein.



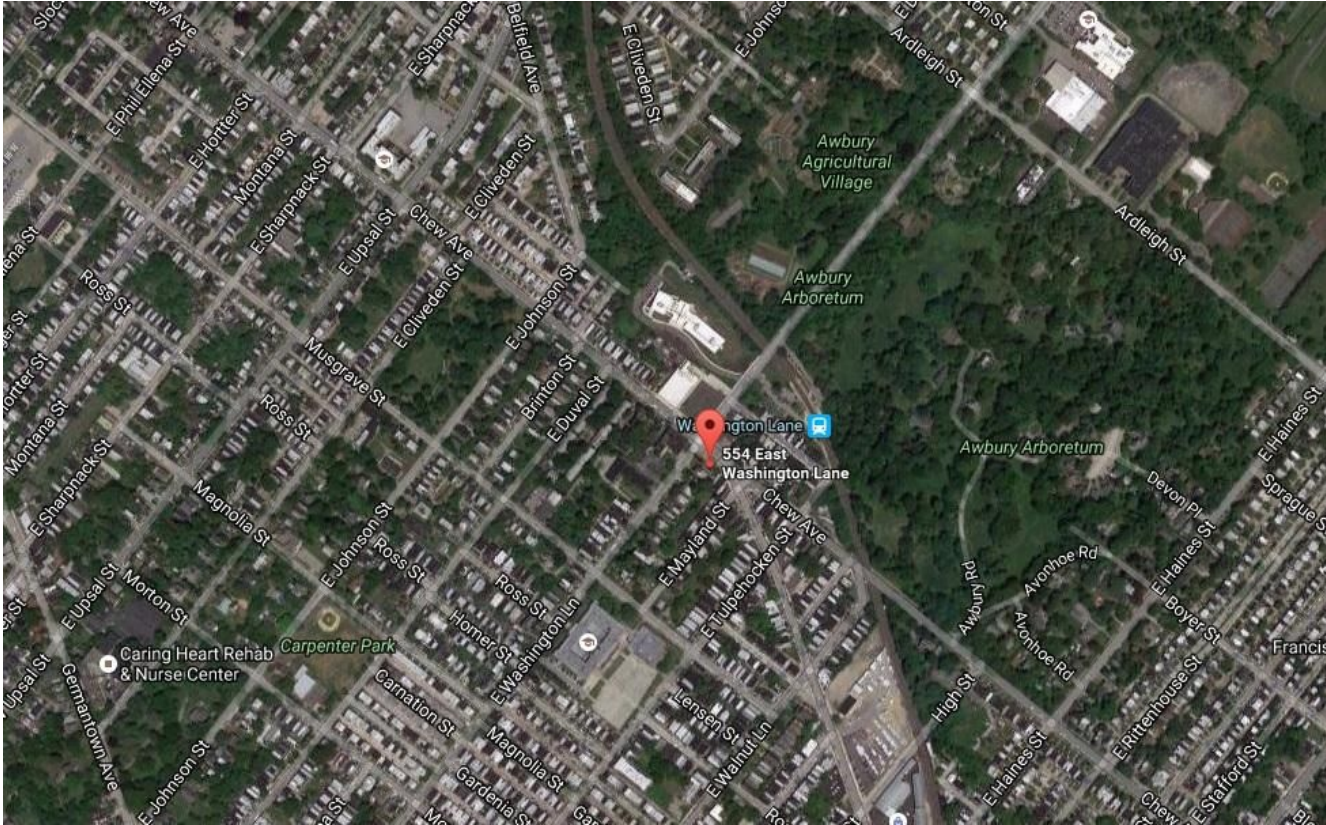
LOCAL MAP

The foregoing information was furnished to us by sources which we deem to be reliable, but no warranty or representation is made as to the accuracy thereof. Subject to correction of errors, omissions, change of price, prior sale or withdrawal from market without notice. No liability of any kind is to be imposed on the Broker herein.



AERIAL VIEW

The foregoing information was furnished to us by sources which we deem to be reliable, but no warranty or representation is made as to the accuracy thereof. Subject to correction of errors, omissions, change of price, prior sale or withdrawal from market without notice. No liability of any kind is to be imposed on the Broker herein.



REGIONAL MAP

The foregoing information was furnished to us by sources which we deem to be reliable, but no warranty or representation is made as to the accuracy thereof. Subject to correction of errors, omissions, change of price, prior sale or withdrawal from market without notice. No liability of any kind is to be imposed on the Broker herein.